

ROGUE



PHOTOMETRICS REPORT



Table of Contents

Introduction.....	1
Testing Process.....	1
Total Illuminance Measurements	1
Testing Lab Equipment and Process	1
Photometrics & Chromaticity Reports	2
Full Spot Full Power	3
Report Summary	3
Overall Measurement.....	3
Beam Details.....	4
ISO Diagrams	5
Chromaticity.....	6
TM-30 Details	7
Full Spot Full Power - Auto	8
Report Summary	8
Overall Measurement.....	8
Beam Details.....	9
ISO Diagrams	10
Chromaticity.....	11
TM-30 Details	12
Full Spot Full Power - Auto - Stable	13
Report Summary	13
Overall Measurement.....	13
Beam Details.....	14
ISO Diagrams	15
Chromaticity.....	16
TM-30 Details	17
Full Spot Full Power - ECO	18
Report Summary	18
Overall Measurement.....	18
Beam Details.....	19
ISO Diagrams	20
Chromaticity.....	21
TM-30 Details	22
Contact_Us	23

Testing Process

Total Illuminance Measurements

Illuminance is measured using the Viso Systems LabSpion[®], which takes multiple measurements across a light beam to calculate the total delivered lumens, beam, and field of a product. These values can be described as the empirical output of the product as it projects from the lens or lenses. All photometric data contained in this report are obtained from the actual illuminance of the tested Chauvet light source and are never theoretical values derived from calculations.

Testing Lab Equipment and Process

The Chauvet headquarters in Davie, Florida has a climate- and light-controlled photometric testing laboratory where Chauvet products are analyzed and photometric data are measured using the Viso Systems LabSpion[®] light measurement solution.

This system includes a spectrometer sensor, which measures the precise light and color output of the fixture, and a two-axis goniometer, which rotates the product to allow for multi-angle and multi-directional measurement. The Viso Light Inspector software then collects and summarizes the data. From the data gathered, the software can also measure the beam and field angles, accurate color temperature, color quality, and illuminance at multiple distances. The custom-built, Chauvet-specific template presents this information in the photometric and chromaticity reports that follow.

IES (Illuminating Engineering Society) files, an industry-standard file format, are also generated from each test for easy distribution of photometric data.

Several light meters are also used for specific products or to recheck for precision. Accuracy is verified using one or more of the devices listed below:

- Sekonic SpectroMaster C-700-U
- EXTECH HD450 Datalogging Heavy Duty Light Meter
- Asensetek Essence Lighting Passport

To ensure accurate measurements in every photometric or chromaticity test, Chauvet routinely calibrates the LabSpion[®] system every six months as recommended by Viso Systems.

ROGUE



Photometrics & Chromaticity Reports

Photometric & Chromaticity Report

Rogue R1E Spot: Full Spot - Full Power

Report Summary

Measurements

Fixture Output: 12210 lm
Fixture Peak: 225525 cd
Fixture Efficacy: 44 lm/W
Intensity @ 5m: 9021 lux
Color Temperature: 8726 K
CRI: 68.0 CRI R9 Value: -17.1
CQS: 66.0
TLCI: 40
TM-30 Rf: 64.4
TM-30 Rg: 97.2
Beam Angle (50%): 15.3°
Field Angle (10%): 18.7°
Cutoff Angle (3%): 20.3°

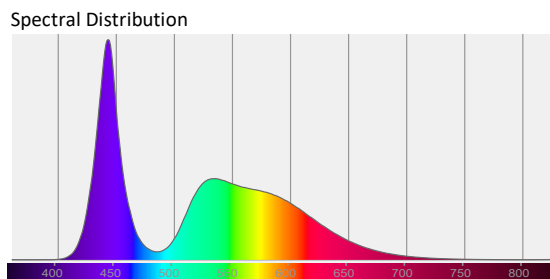
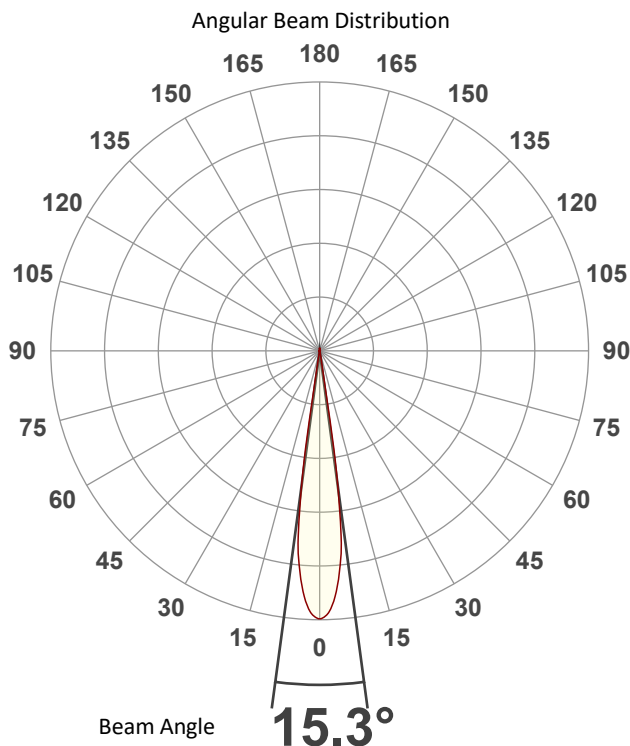


Conditions

AC Supply: 116 V, 60 Hz
Power: 278.99 W
Current: 2.40 A
Power Factor: 0.99

This data sheet conforms to American National Standard E1.9 – 2007 (R2017). All data was measured and calculated by a Viso Systems LabSpion Goniometer at the Chauvet PD Optics Laboratory in Sunrise, FL on 1/25/2024 to LM-63-2002 Standards.

Overall Measurement



Tested Color (CIE 1931):
X: 0.292
Y: 0.292

Light Quality
CRI: 68.0

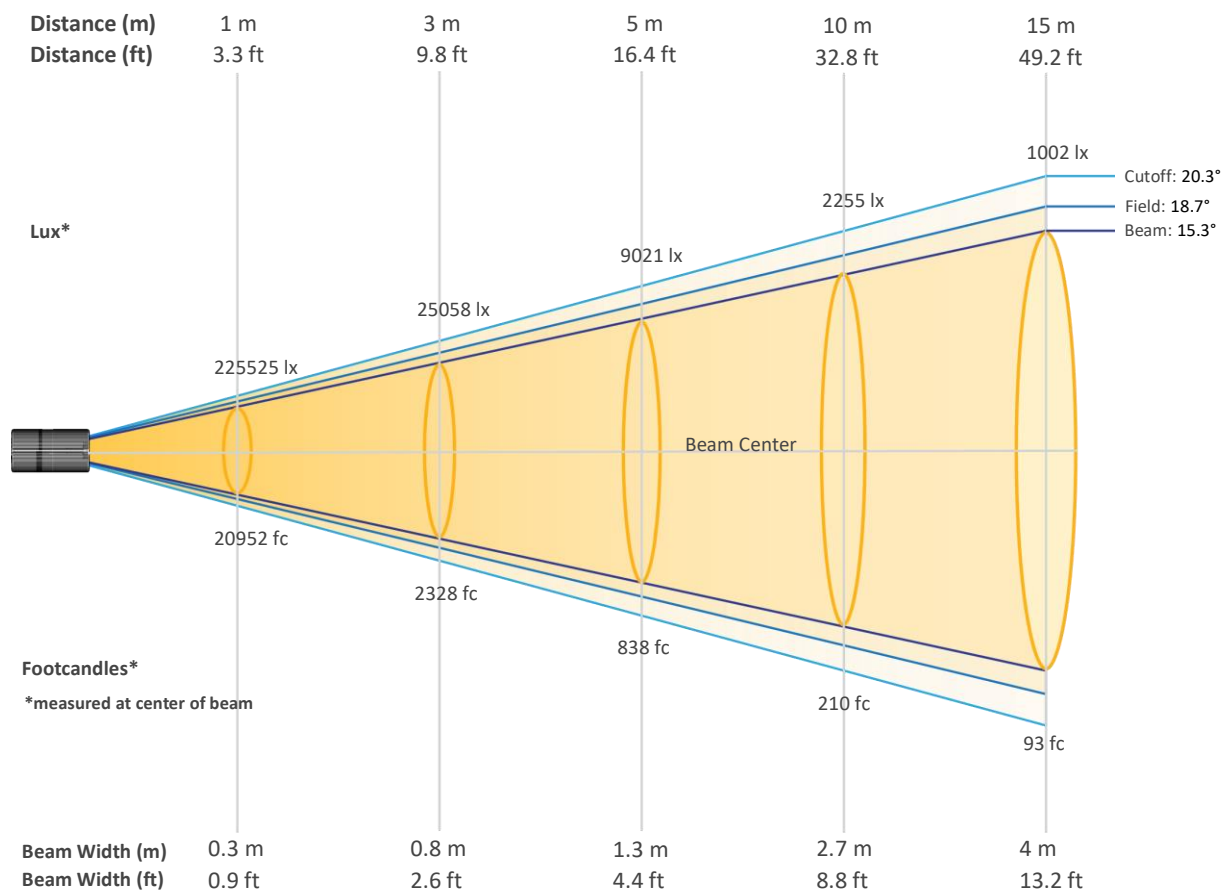
Color Temperature
8726 K



Photometric & Chromaticity Report

Rogue R1E Spot: Full Spot - Full Power

Beam Details

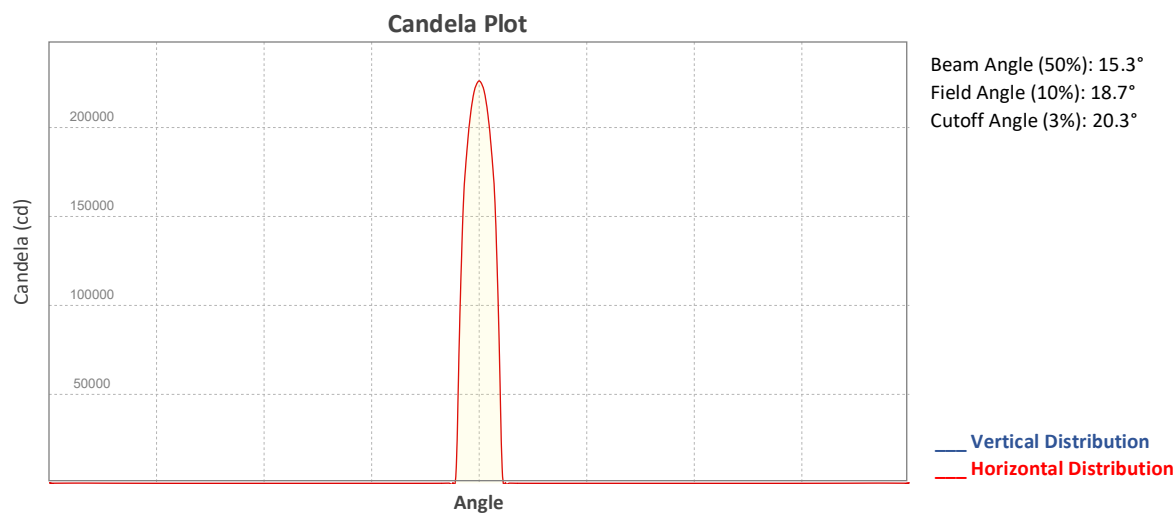


Beam Intensities from 1-20m (3.3-65.6ft)

Distance	1m	2m	3m	4m	5m	6m	7m	8m	9m	10m
Lux	225525	56381	25058	14095	9021	6265	4603	3524	2784	2255
Distance	11m	12m	13m	14m	15m	16m	17m	18m	19m	20m
Lux	1864	1566	1334	1151	1002	881	780	696	625	564
Distance	3.3ft	6.6ft	9.8ft	13.1ft	16.4ft	19.7ft	23ft	26.2ft	29.5ft	32.8ft
FC	20952	5238	2328	1309	838	582	428	327	259	210
Distance	36.1ft	39.4ft	42.7ft	45.9ft	49.2ft	52.5ft	55.8ft	59.1ft	62.3ft	65.6ft
FC	173	145	124	107	93	82	72	65	58	52

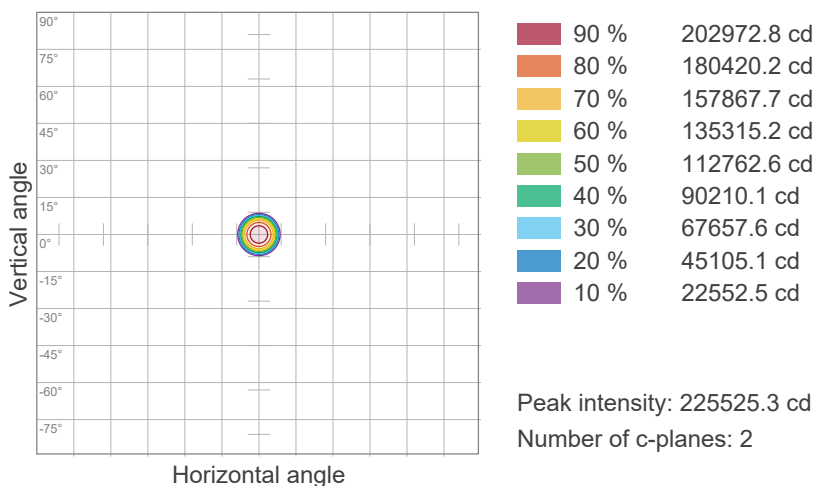
Photometric & Chromaticity Report

Rogue R1E Spot: Full Spot - Full Power

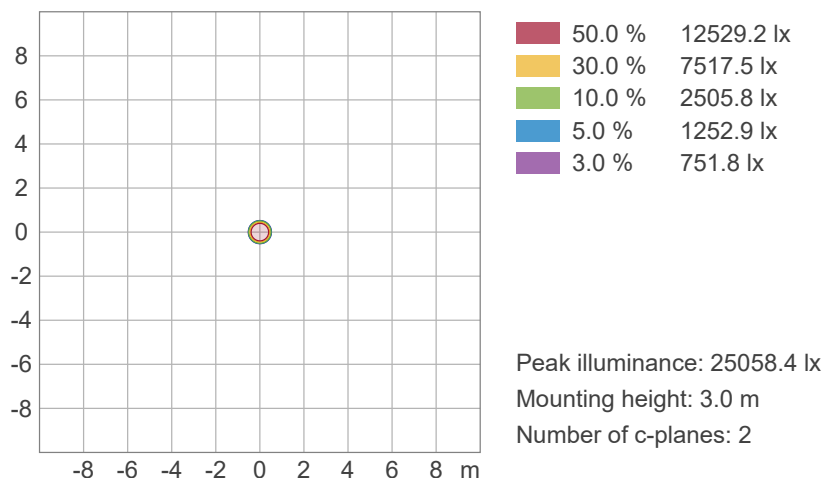


ISO Diagrams

ISO Candela Diagram



ISO Lux Diagram

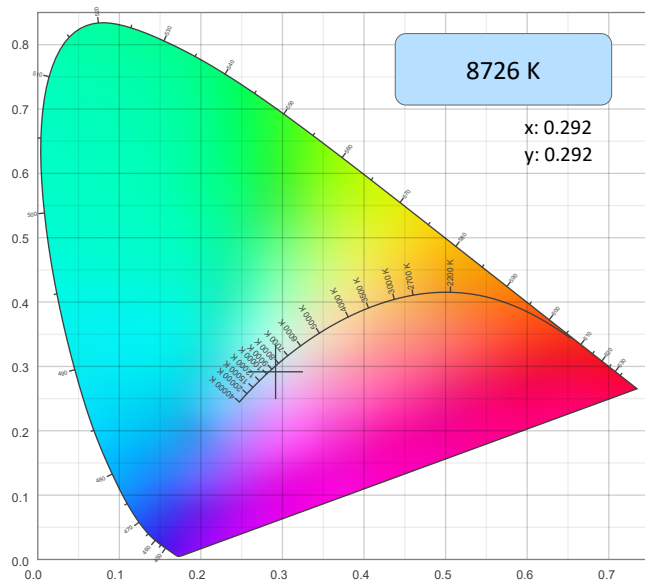


Photometric & Chromaticity Report

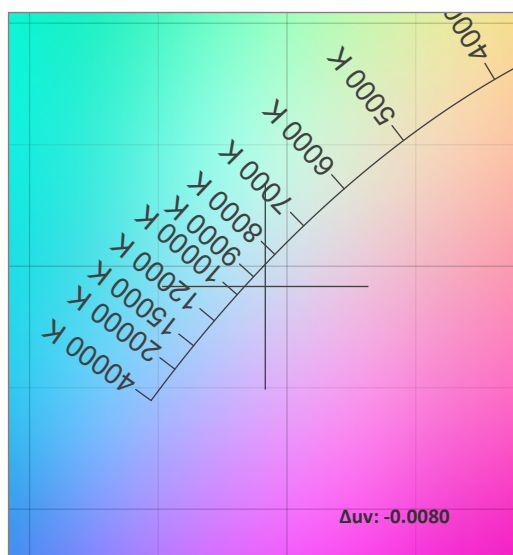
Rogue R1E Spot: Full Spot - Full Power

Chromaticity

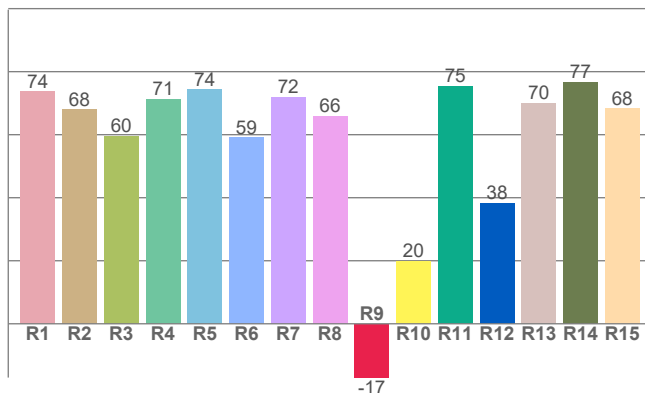
CIE 1931



CIE 1931 - Zoom



CRI: 68.0 (R1-R8)

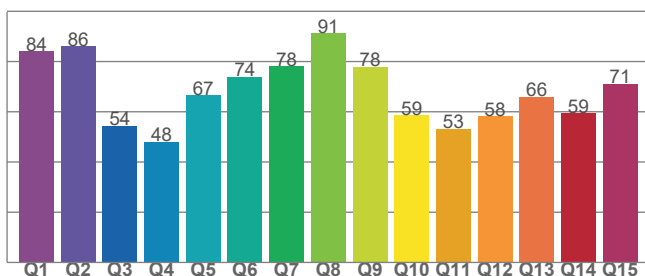


Color Parameters

Color Temperature	Color Coordinate CIE 1931	Color Coordinate CIE 1931
CCT	x	y
8726 K	0.292	0.292

Color Deviation from Black Body Curve	Color Coordinate CIE 1964	Color Coordinate CIE 1964
Δuv	y	u
-0.0080	0.292	0.197

CQS: 66.0



Color Rendering Index	Red Component	Color Quality Scale
CRI	CRI - R9	CQS
68.0	-17.1	66.0

Television Lighting Consistency Index	Color Fidelity	Color Gamut
TLCI	TM30 - Rf	TM30 Rg
40	64.4	97.2

Photometric & Chromaticity Report

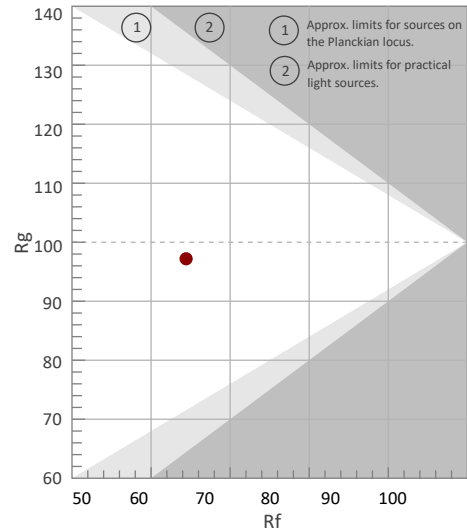
Rogue R1E Spot: Full Spot - Full Power

TM-30 Details

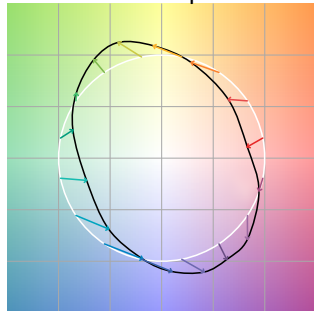
Rf 64.4
Fidelity Index (Rg)

Rg 97.2
Gammut Index (Rg)

Hue Bin	R _f	Graphic shifts (%)	
		Chroma	Hue
1	69	-16%	-5%
2	67	-15%	12%
3	52	-7%	28%
4	57	5%	29%
5	59	18%	19%
6	75	16%	2%
7	89	4%	-6%
8	75	-10%	-10%
9	71	-24%	7%
10	56	-19%	29%
11	22	-8%	39%
12	58	6%	31%
13	69	16%	19%
14	72	17%	-2%
15	73	13%	-19%
16	77	-1%	-13%



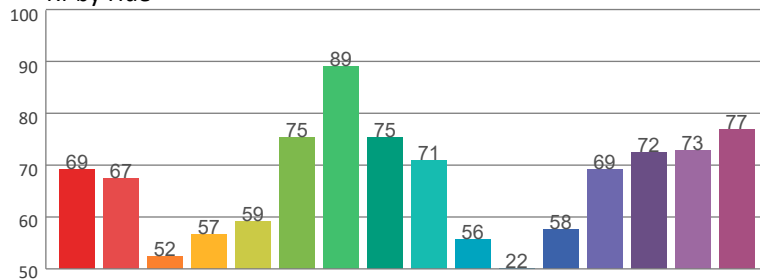
Color Vector Graphic



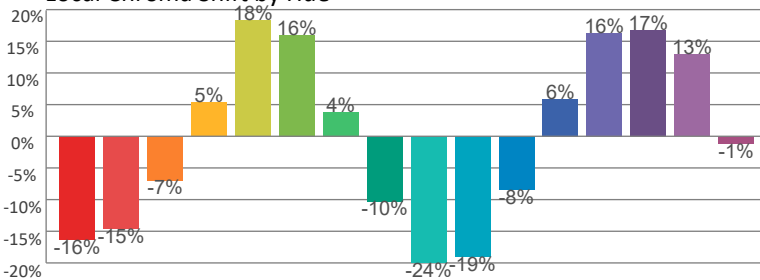
Color Distortion Graphic



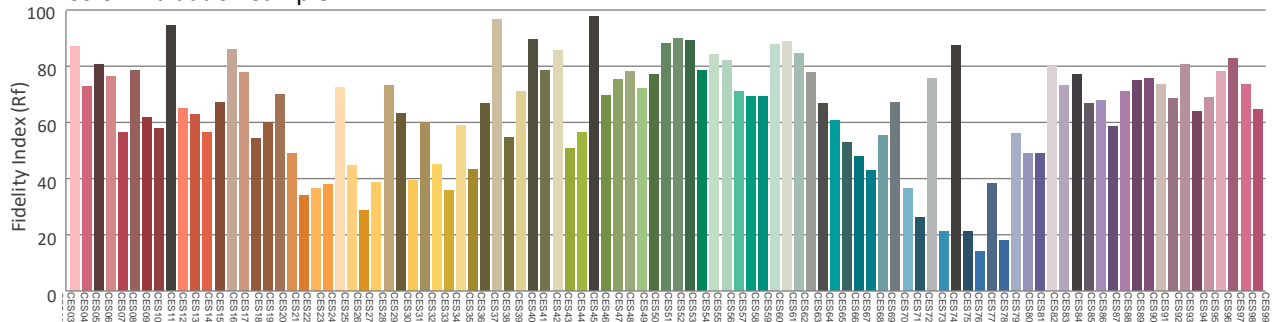
Rf by Hue



Local Chroma Shift by Hue



Color Evaluation Sample



Photometric & Chromaticity Report

Rogue R1E Spot: Full Spot - Full Power

Report Summary

Measurements

Fixture Output: 12038 lm
Fixture Peak: 223066 cd
Fixture Efficacy: 44 lm/W
Intensity @ 5m: 8923 lux
Color Temperature: 8743 K
CRI: 68.0 CRI R9 Value: -16.9
CQS: 66.0
TLCI: 40
TM-30 Rf: 64.5
TM-30 Rg: 97.2
Beam Angle (50%): 15.5°
Field Angle (10%): 18.5°
Cutoff Angle (3%): 20.4°

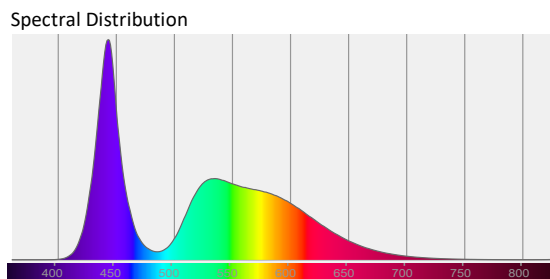
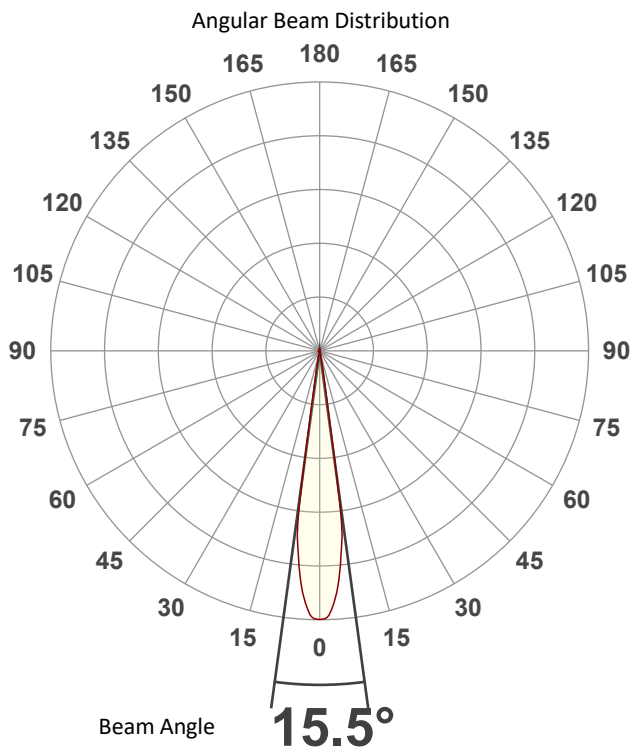


Conditions

AC Supply: 116 V, 60 Hz
Power: 278.57 W
Current: 2.39 A
Power Factor: 0.99

This data sheet conforms to American National Standard E1.9 – 2007 (R2017). All data was measured and calculated by a Viso Systems LabSpion Goniometer at the Chauvet PD Optics Laboratory in Sunrise, FL on 1/25/2024 to LM-63-2002 Standards.

Overall Measurement



Tested Color (CIE 1931):
X: 0.291
Y: 0.291

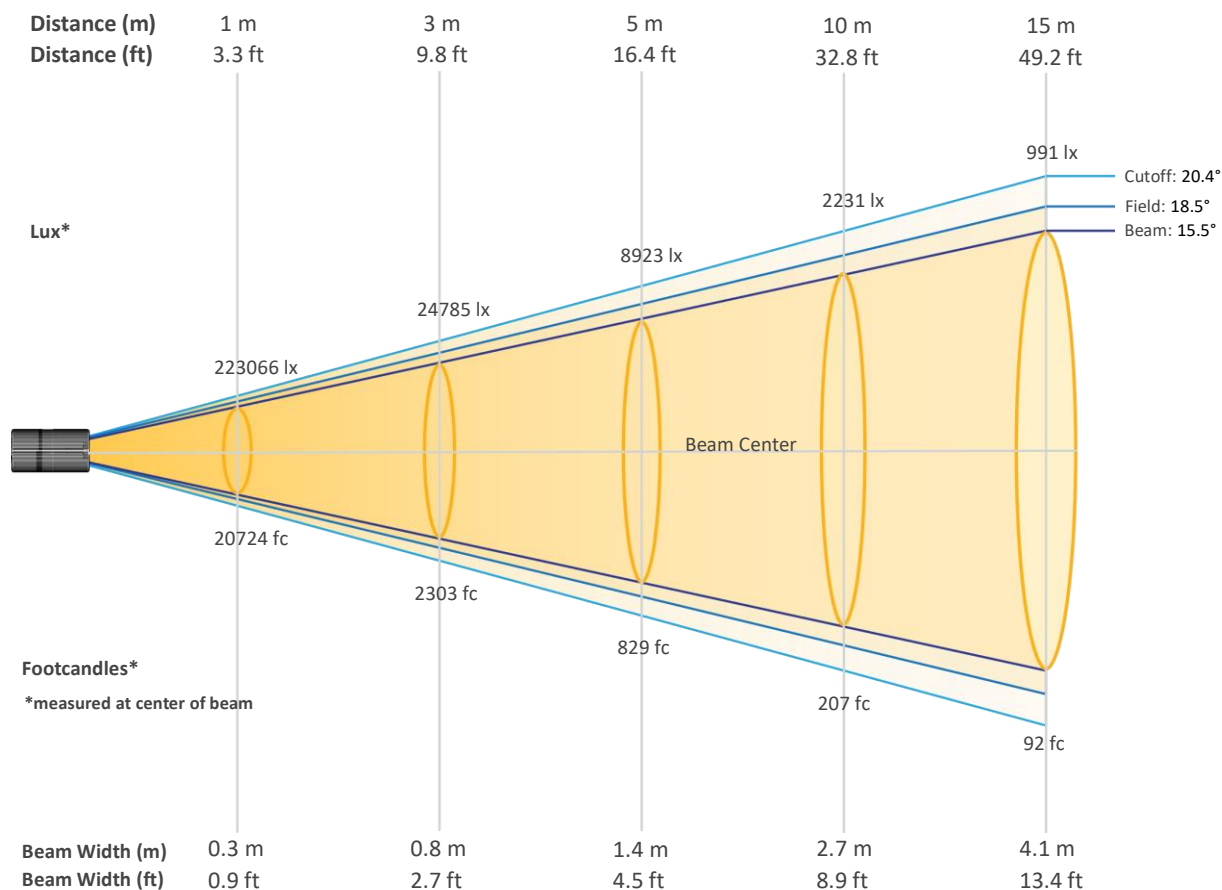
Light Quality
CRI: 68.0

Color Temperature
8743 K

Photometric & Chromaticity Report

Rogue R1E Spot: Full Spot - Full Power

Beam Details

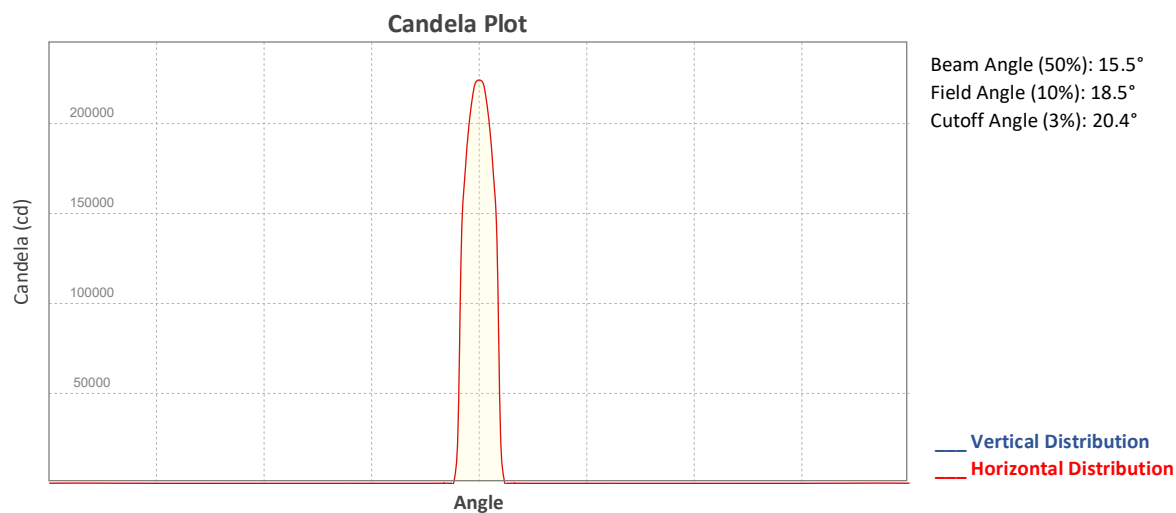


Beam Intensities from 1-20m (3.3-65.6ft)

Distance	1m	2m	3m	4m	5m	6m	7m	8m	9m	10m
Lux	223066	55767	24785	13942	8923	6196	4552	3485	2754	2231
Distance	11m	12m	13m	14m	15m	16m	17m	18m	19m	20m
Lux	1844	1549	1320	1138	991	871	772	688	618	558
Distance	3.3ft	6.6ft	9.8ft	13.1ft	16.4ft	19.7ft	23ft	26.2ft	29.5ft	32.8ft
FC	20724	5181	2303	1295	829	576	423	324	256	207
Distance	36.1ft	39.4ft	42.7ft	45.9ft	49.2ft	52.5ft	55.8ft	59.1ft	62.3ft	65.6ft
FC	171	144	123	106	92	81	72	64	57	52

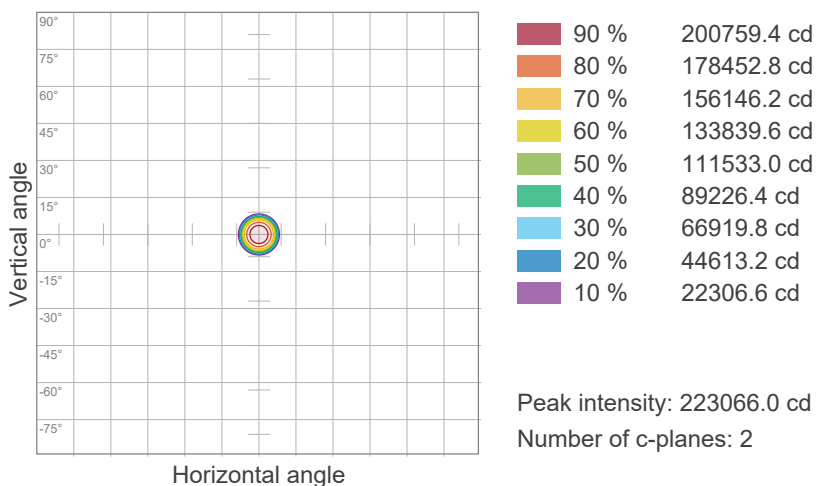
Photometric & Chromaticity Report

Rogue R1E Spot: Full Spot - Full Power

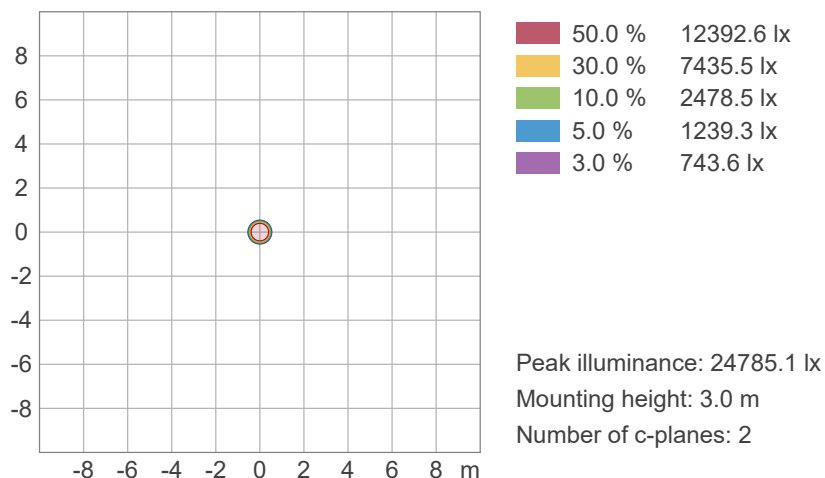


ISO Diagrams

ISO Candela Diagram



ISO Lux Diagram

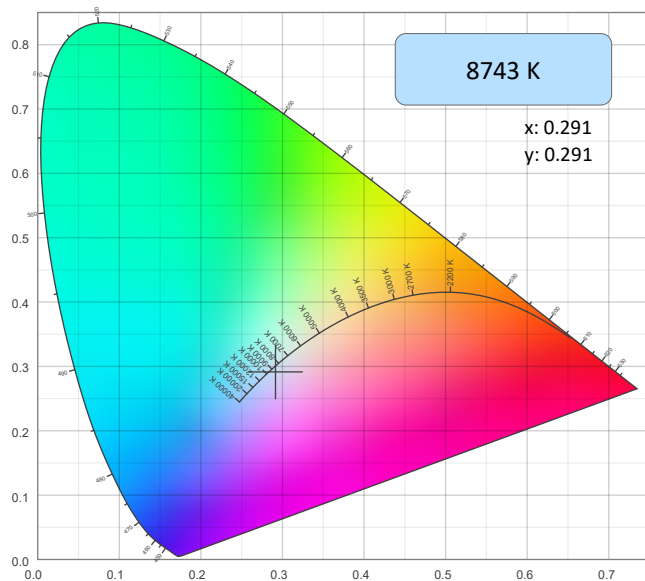


Photometric & Chromaticity Report

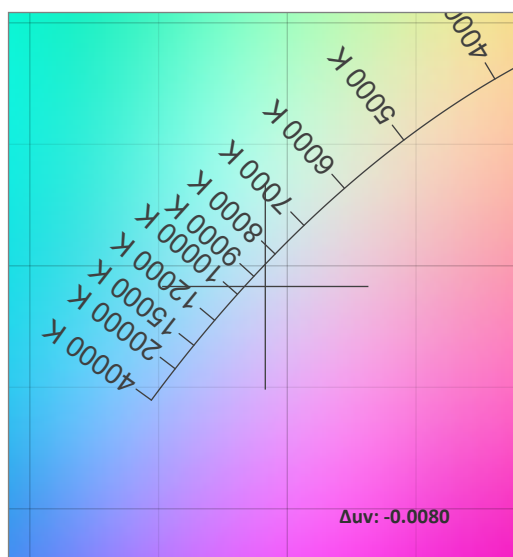
Rogue R1E Spot: Full Spot - Full Power

Chromaticity

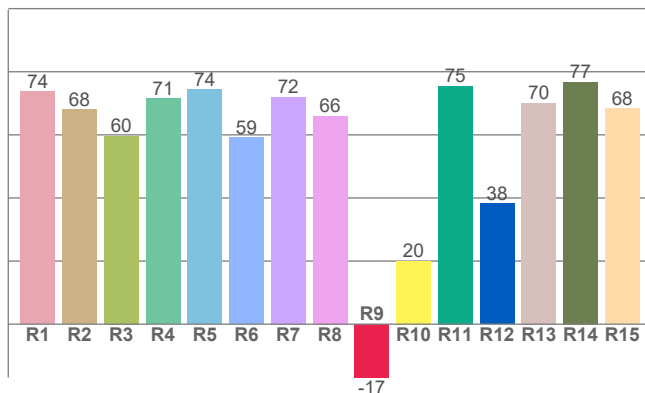
CIE 1931



CIE 1931 - Zoom



CRI: 68.0 (R1-R8)

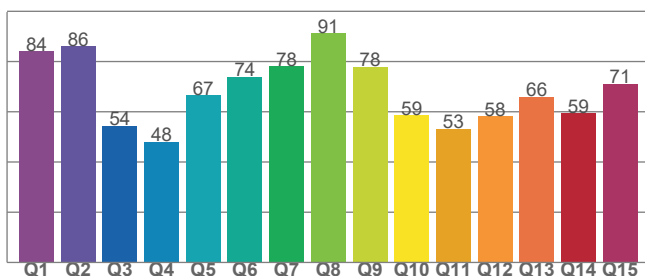


Color Parameters

Color Temperature	Color Coordinate CIE 1931	Color Coordinate CIE 1931
CCT	x	y
8743 K	0.291	0.291

Color Deviation from Black Body Curve	Color Coordinate CIE 1964	Color Coordinate CIE 1964
Δuv	y	u
-0.0080	0.291	0.197

CQS: 66.0



Color Rendering Index	Red Component	Color Quality Scale
CRI	CRI - R9	CQS
68.0	-16.9	66.0

Television Lighting Consistency Index	Color Fidelity	Color Gamut
TLCI	TM30 - Rf	TM30 Rg
40	64.5	97.2

Photometric & Chromaticity Report

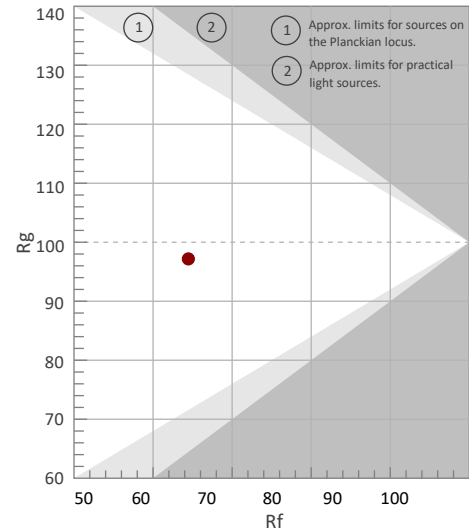
Rogue R1E Spot: Full Spot - Full Power

TM-30 Details

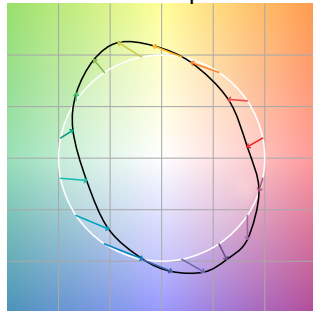
Rf 64.5
Fidelity Index
(Rg)

Rg 97.2
Gammut Index (Rg)

Hue Bin	R _f	Graphic shifts (%)	
		Chroma	Hue
1	69	-16%	-5%
2	67	-15%	12%
3	52	-7%	28%
4	57	5%	29%
5	59	18%	19%
6	75	16%	2%
7	89	4%	-6%
8	75	-10%	-10%
9	71	-24%	7%
10	56	-19%	29%
11	22	-8%	39%
12	58	6%	31%
13	69	16%	19%
14	73	17%	-2%
15	73	13%	-19%
16	77	-1%	-13%



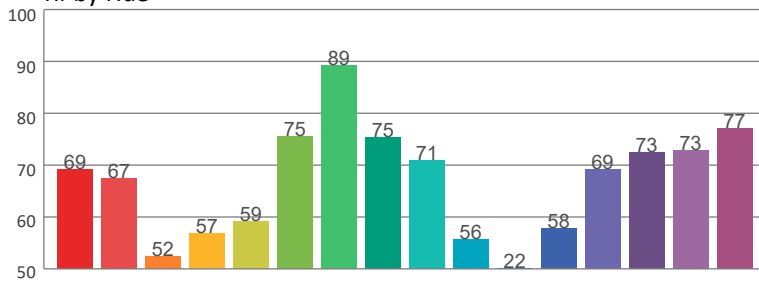
Color Vector Graphic



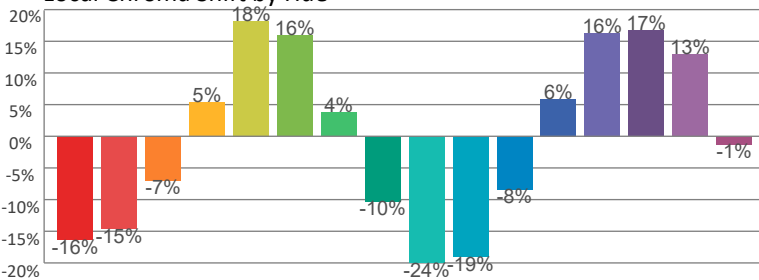
Color Distortion Graphic



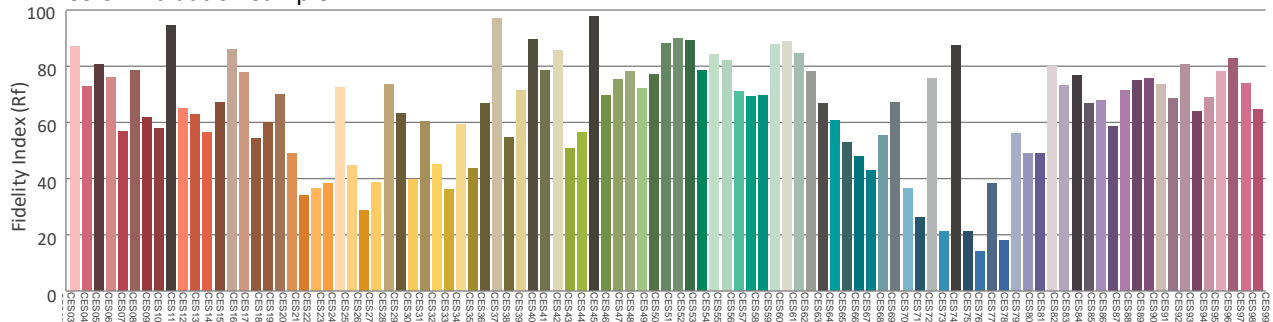
R_f by Hue



Local Chroma Shift by Hue



Color Evaluation Sample



Photometric & Chromaticity Report

Rogue R1E Spot: Full Spot - Full Power-Stable

Report Summary

Measurements

Fixture Output: 11997 lm
Fixture Peak: 221628 cd
Fixture Efficacy: 44 lm/W
Intensity @ 5m: 8865 lux
Color Temperature: 8722 K
CRI: 68.1 CRI R9 Value: -17.4
CQS: 65.9
TLCI: 40
TM-30 Rf: 64.6
TM-30 Rg: 97.0
Beam Angle (50%): 15.6°
Field Angle (10%): 18.2°
Cutoff Angle (3%): 20.4°

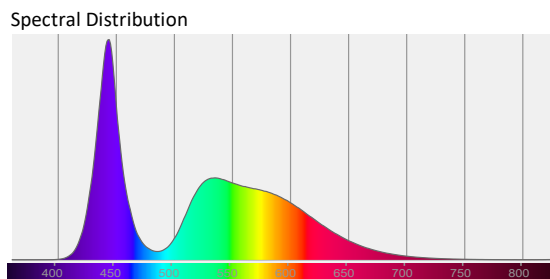
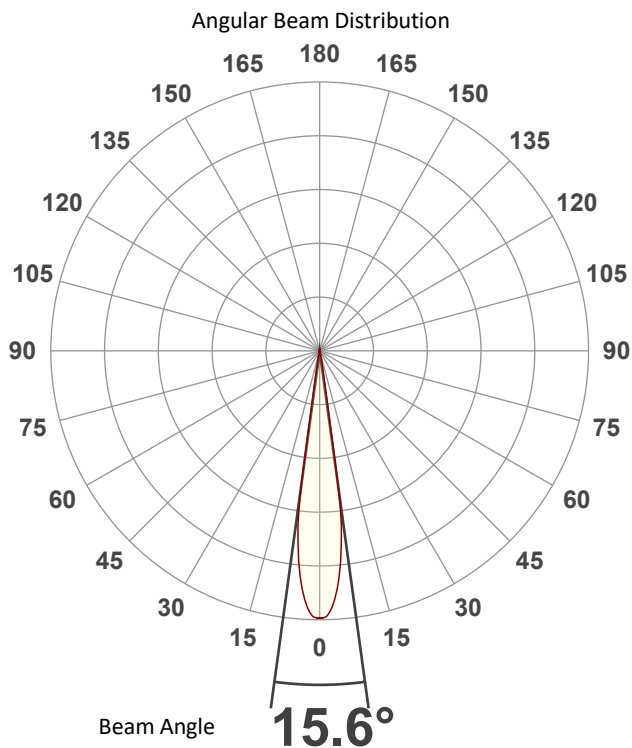


Conditions

AC Supply: 116 V, 60 Hz
Power: 277.92 W
Current: 2.39 A
Power Factor: 0.99

This data sheet conforms to American National Standard E1.9 – 2007 (R2017). All data was measured and calculated by a Viso Systems LabSpion Goniometer at the Chauvet PD Optics Laboratory in Sunrise, FL on 1/25/2024 to LM-63-2002 Standards.

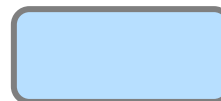
Overall Measurement



Tested Color (CIE 1931):

X: 0.292

Y: 0.292



Light Quality

CRI: 68.1

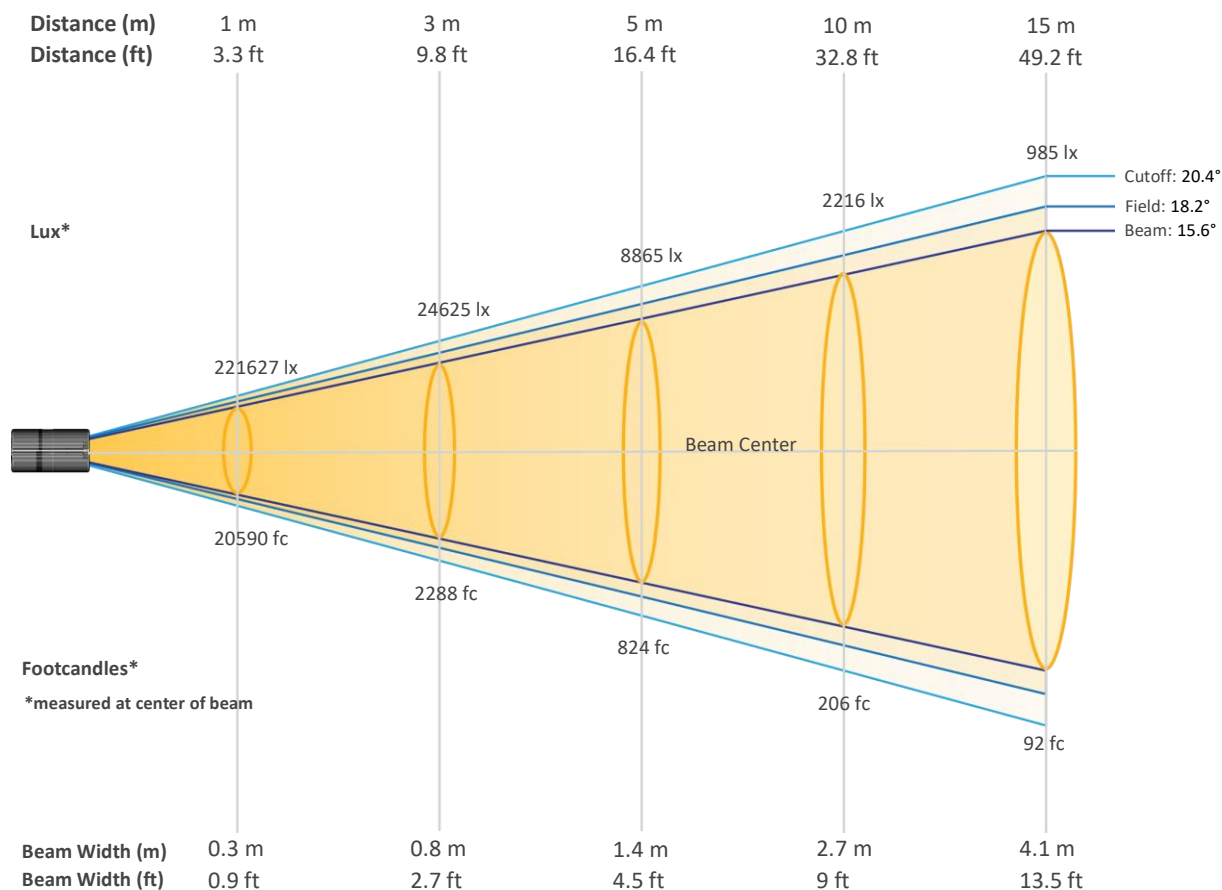
Color Temperature

8722 K

Photometric & Chromaticity Report

Rogue R1E Spot: Full Spot - Full Power-Stable

Beam Details

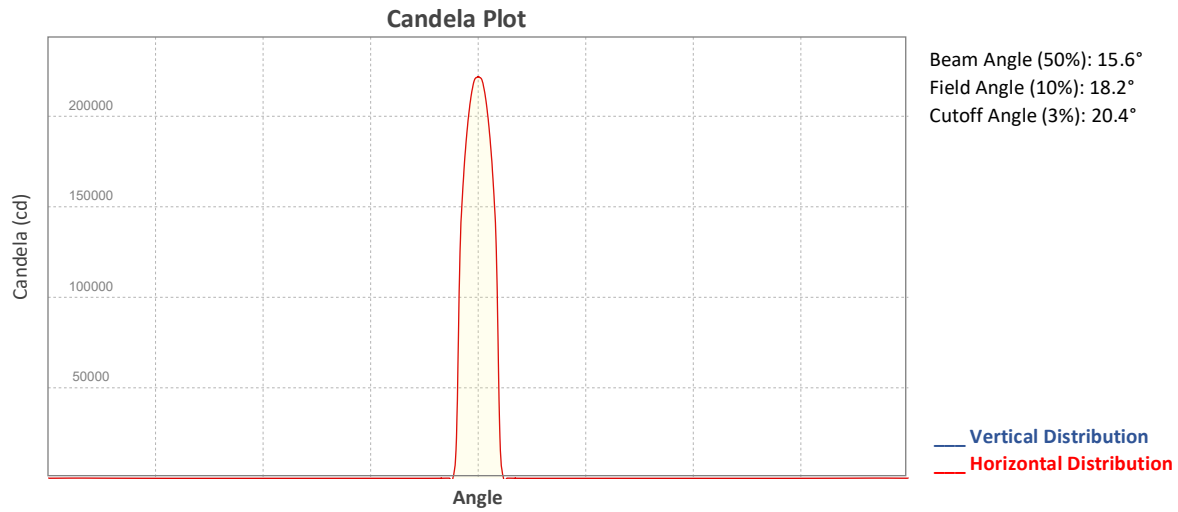


Beam Intensities from 1-20m (3.3-65.6ft)

Distance	1m	2m	3m	4m	5m	6m	7m	8m	9m	10m
Lux	221627	55407	24625	13852	8865	6156	4523	3463	2736	2216
Distance	11m	12m	13m	14m	15m	16m	17m	18m	19m	20m
Lux	1832	1539	1311	1131	985	866	767	684	614	554
Distance	3.3ft	6.6ft	9.8ft	13.1ft	16.4ft	19.7ft	23ft	26.2ft	29.5ft	32.8ft
FC	20590	5147	2288	1287	824	572	420	322	254	206
Distance	36.1ft	39.4ft	42.7ft	45.9ft	49.2ft	52.5ft	55.8ft	59.1ft	62.3ft	65.6ft
FC	170	143	122	105	92	80	71	64	57	51

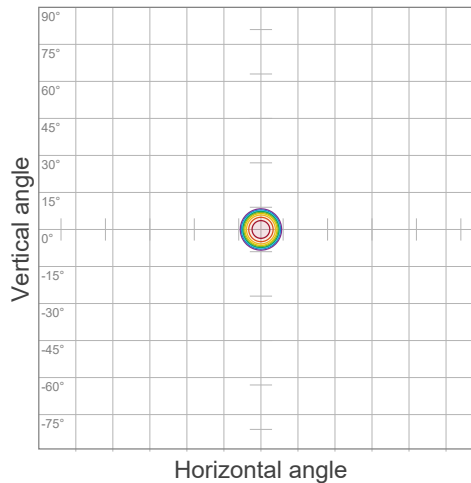
Photometric & Chromaticity Report

Rogue R1E Spot: Full Spot - Full Power-Stable



ISO Diagrams

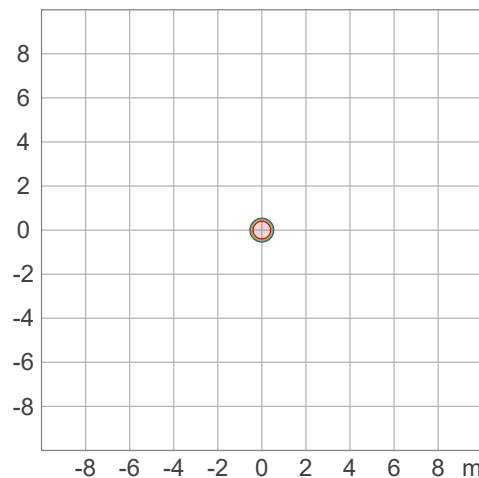
ISO Candela Diagram



90 %	199464.8 cd
80 %	177302.0 cd
70 %	155139.3 cd
60 %	132976.5 cd
50 %	110813.8 cd
40 %	88651.0 cd
30 %	66488.3 cd
20 %	44325.5 cd
10 %	22162.8 cd

Peak intensity: 221627.5 cd
 Number of c-planes: 2

ISO Lux Diagram



50.0 %	12312.6 lx
30.0 %	7387.6 lx
10.0 %	2462.5 lx
5.0 %	1231.3 lx
3.0 %	738.8 lx

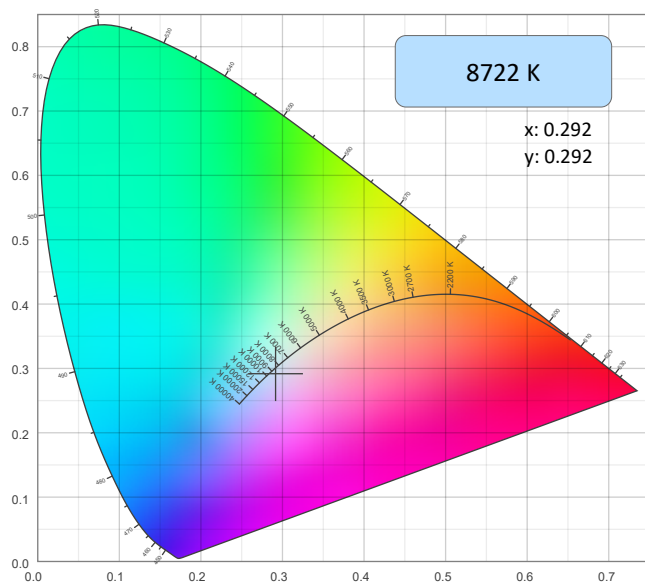
Peak illuminance: 24625.3 lx
 Mounting height: 3.0 m
 Number of c-planes: 2

Photometric & Chromaticity Report

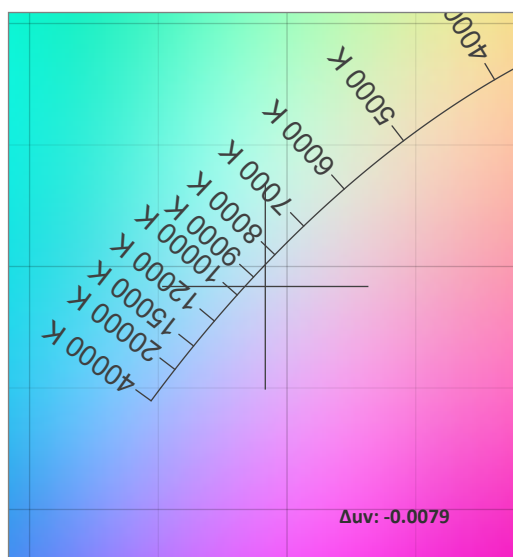
Rogue R1E Spot: Full Spot - Full Power-Stable

Chromaticity

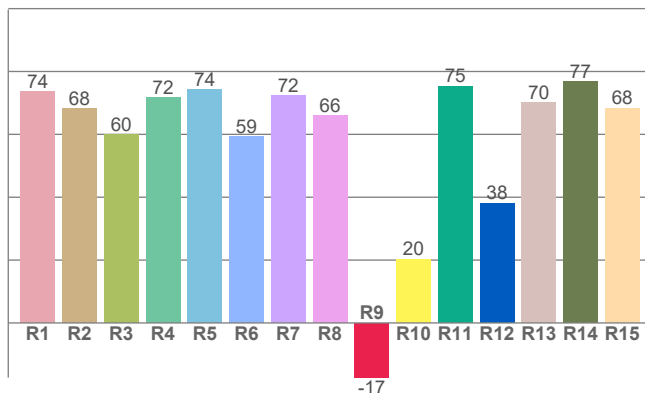
CIE 1931



CIE 1931 - Zoom



CRI: 68.1 (R1-R8)

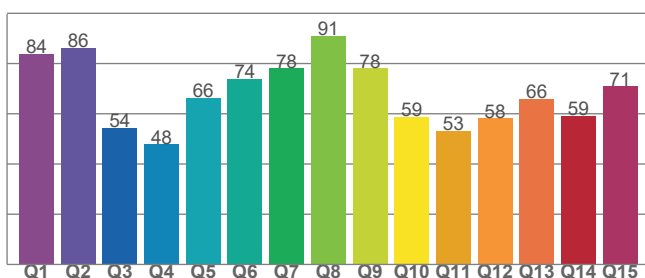


Color Parameters

Color Temperature	Color Coordinate CIE 1931	Color Coordinate CIE 1931
CCT	x	y
8722 K	0.292	0.292

Color Deviation from Black Body Curve	Color Coordinate CIE 1964	Color Coordinate CIE 1964
Δuv	y	u
-0.0079	0.292	0.197

CQS: 65.9



Color Rendering Index	Red Component	Color Quality Scale
CRI	CRI - R9	CQS
68.1	-17.4	65.9

Television Lighting Consistency Index	Color Fidelity	Color Gamut
TLCI	TM30 - Rf	TM30 Rg
40	64.6	97.0



Photometric & Chromaticity Report

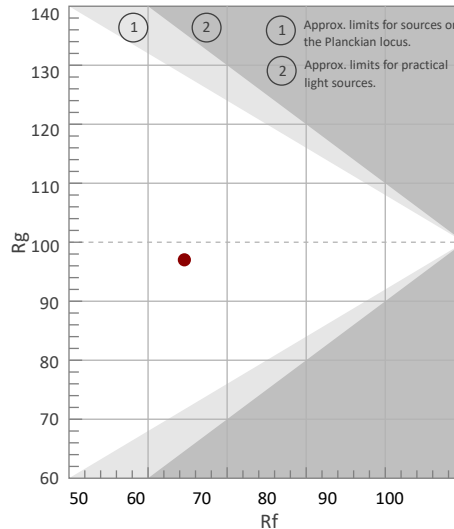
Rogue R1E Spot: Full Spot - Full Power-Stable

TM-30 Details

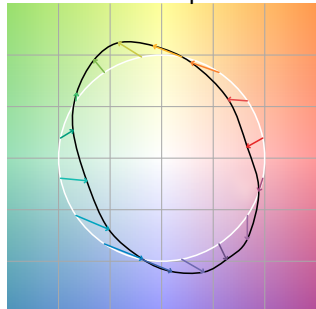
Rf 64.6
Fidelity Index (Rg)

Rg 97.0
Gammut Index (Rg)

Hue Bin	Graphic shifts (%)		
	R _f	Chroma	Hue
1	69	-17%	-5%
2	67	-15%	12%
3	53	-7%	28%
4	57	5%	29%
5	60	18%	19%
6	76	16%	2%
7	89	4%	-6%
8	75	-10%	-10%
9	71	-24%	7%
10	56	-19%	29%
11	23	-8%	39%
12	58	6%	31%
13	69	16%	19%
14	73	17%	-2%
15	73	13%	-19%
16	77	-1%	-13%



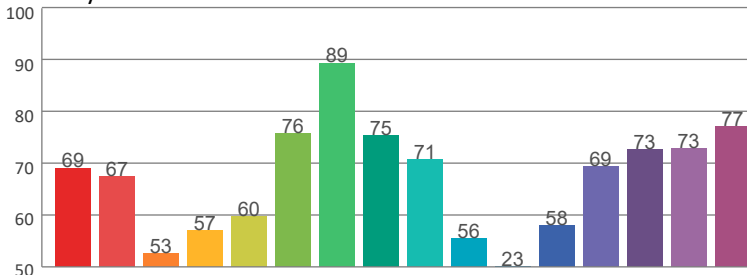
Color Vector Graphic



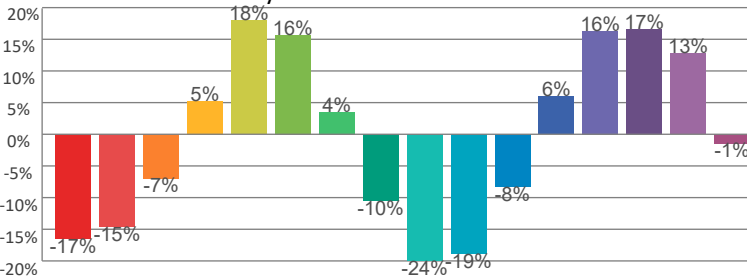
Color Distortion Graphic



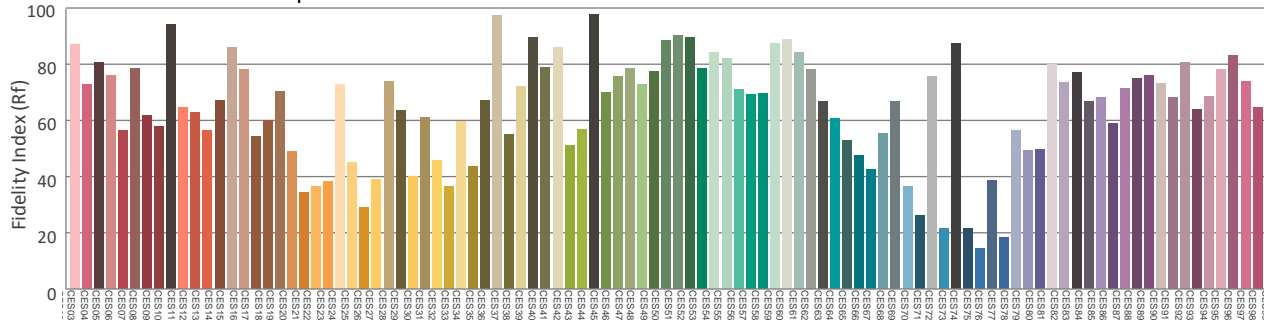
R_f by Hue



Local Chroma Shift by Hue



Color Evaluation Sample



Photometric & Chromaticity Report

Rogue R1E Spot: Full Spot - Full Power

Report Summary

Measurements

Fixture Output: 10687 lm
Fixture Peak: 197764 cd
Fixture Efficacy: 44 lm/W
Intensity @ 5m: 7911 lux
Color Temperature: 8682 K
CRI: 67.8 CRI R9 Value: -17.9
CQS: 66.0
TLCI: 40
TM-30 Rf: 64.3
TM-30 Rg: 97.3
Beam Angle (50%): 15.2°
Field Angle (10%): 18.9°
Cutoff Angle (3%): 19.6°

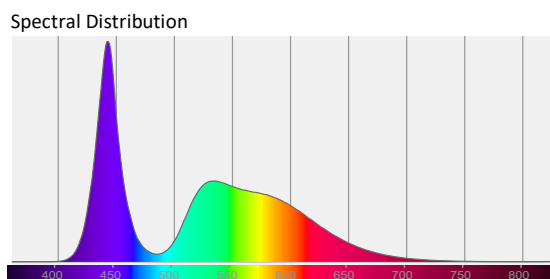
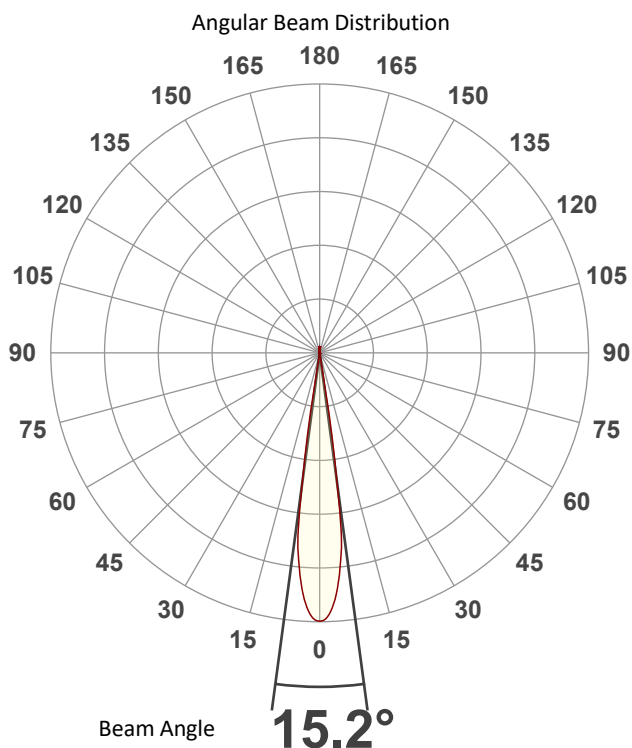


Conditions

AC Supply: 117 V, 60 Hz
Power: 247.82 W
Current: 2.12 A
Power Factor: 0.99

This data sheet conforms to American National Standard E1.9 – 2007 (R2017). All data was measured and calculated by a Viso Systems LabSpion Goniometer at the Chauvet PD Optics Laboratory in Sunrise, FL on 1/25/2024 to LM-63-2002 Standards.

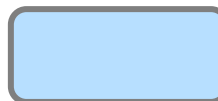
Overall Measurement



Tested Color (CIE 1931):

X: 0.292

Y: 0.292



Light Quality

CRI: 67.8

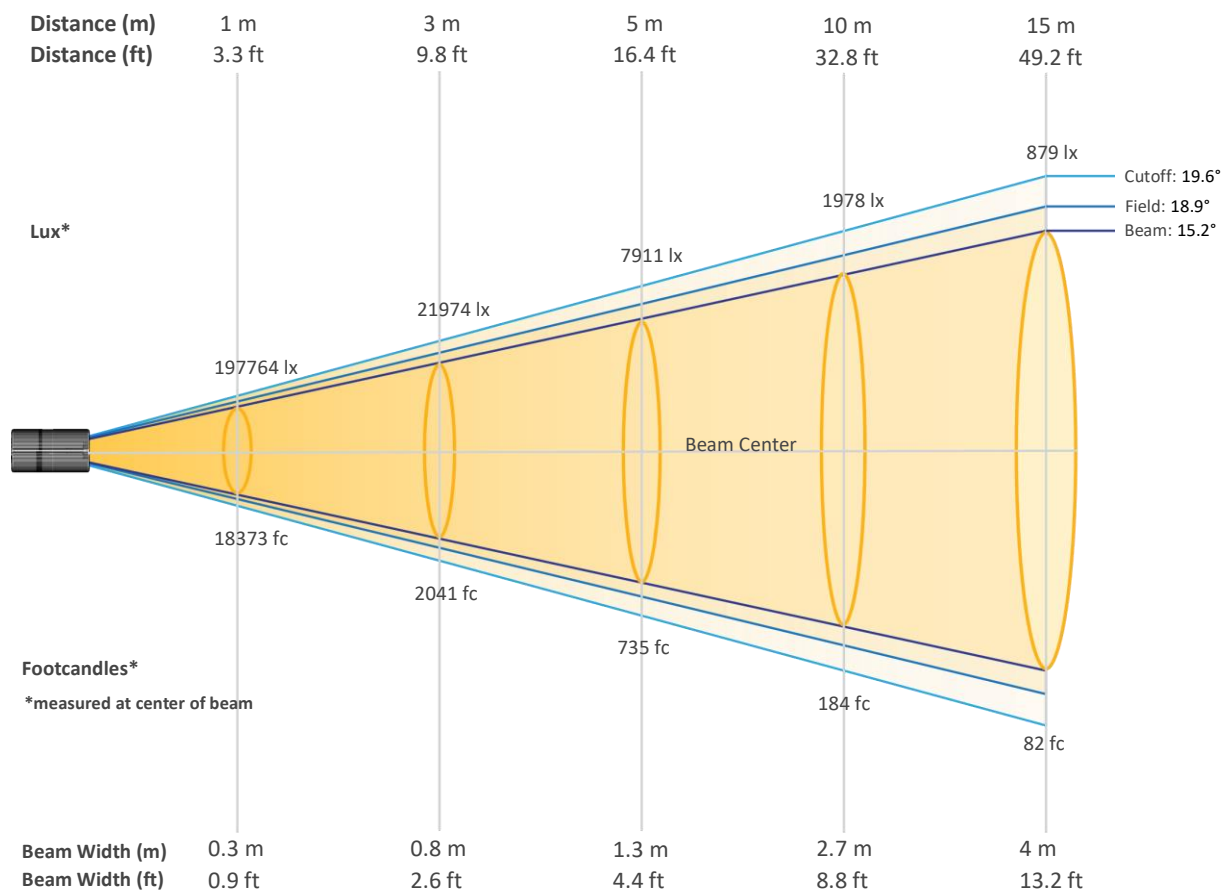
Color Temperature

8682 K

Photometric & Chromaticity Report

Rogue R1E Spot: Full Spot - Full Power

Beam Details

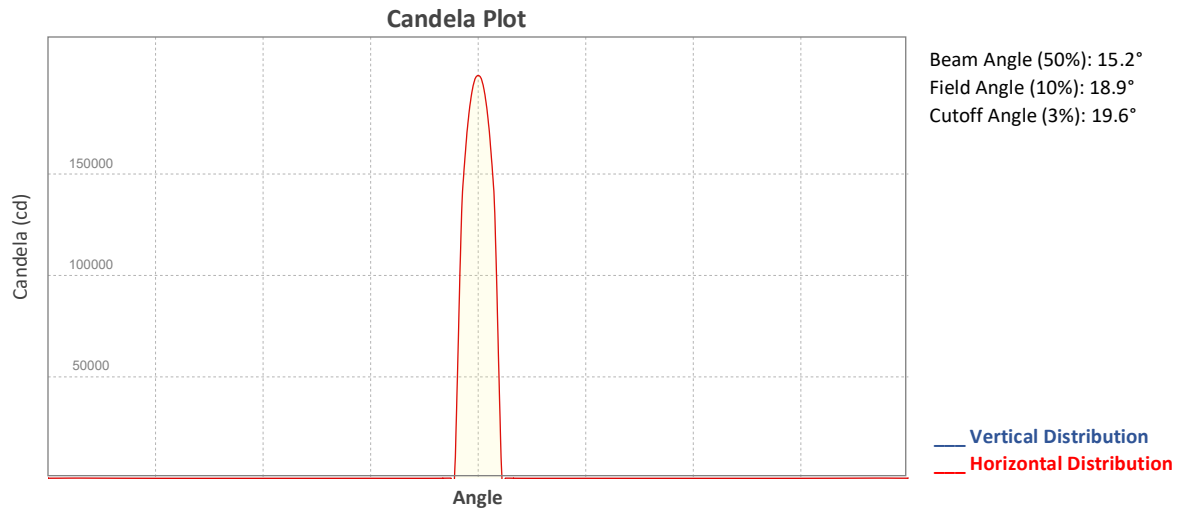


Beam Intensities from 1-20m (3.3-65.6ft)

Distance	1m	2m	3m	4m	5m	6m	7m	8m	9m	10m
Lux	197764	49441	21974	12360	7911	5493	4036	3090	2442	1978
Distance	11m	12m	13m	14m	15m	16m	17m	18m	19m	20m
Lux	1634	1373	1170	1009	879	773	684	610	548	494
Distance	3.3ft	6.6ft	9.8ft	13.1ft	16.4ft	19.7ft	23ft	26.2ft	29.5ft	32.8ft
FC	18373	4593	2041	1148	735	510	375	287	227	184
Distance	36.1ft	39.4ft	42.7ft	45.9ft	49.2ft	52.5ft	55.8ft	59.1ft	62.3ft	65.6ft
FC	152	128	109	94	82	72	64	57	51	46

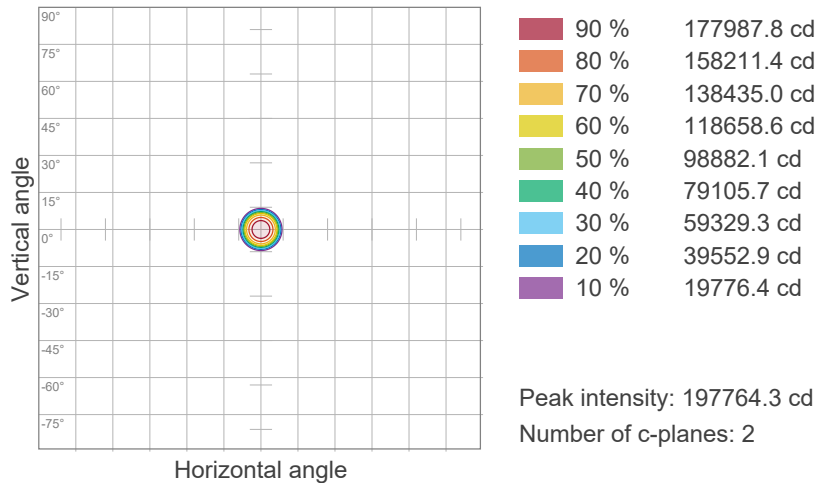
Photometric & Chromaticity Report

Rogue R1E Spot: Full Spot - Full Power

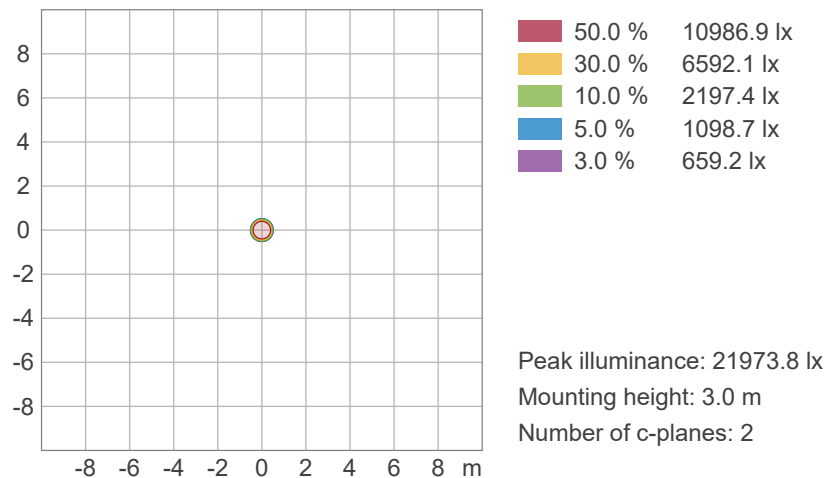


ISO Diagrams

ISO Candela Diagram



ISO Lux Diagram

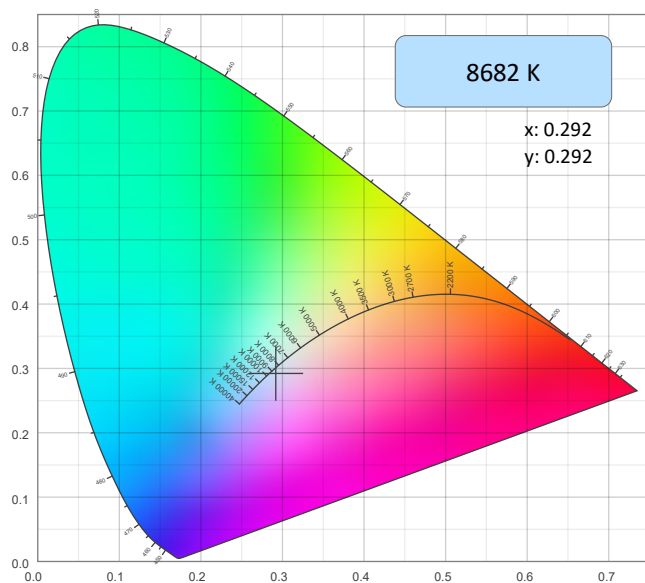


Photometric & Chromaticity Report

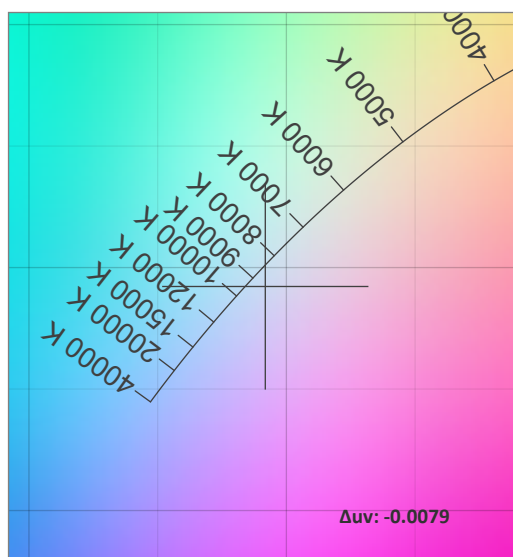
Rogue R1E Spot: Full Spot - Full Power

Chromaticity

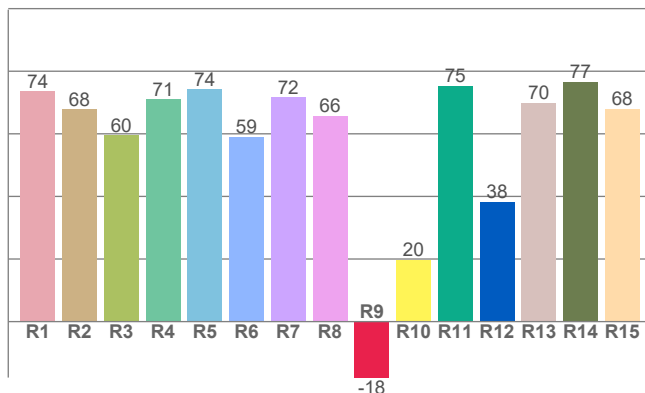
CIE 1931



CIE 1931 - Zoom



CRI: 67.8 (R1-R8)

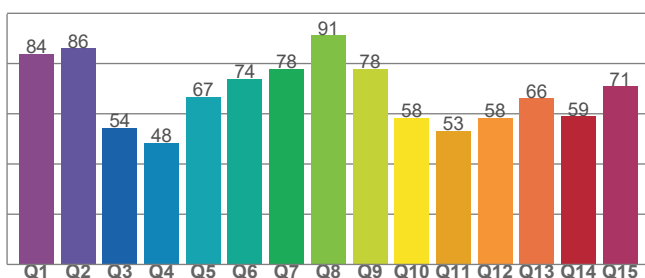


Color Parameters

Color Temperature	Color Coordinate CIE 1931	Color Coordinate CIE 1931
CCT	x	y
8682 K	0.292	0.292

Color Deviation from Black Body Curve	Color Coordinate CIE 1964	Color Coordinate CIE 1964
Δuv	y	u
-0.0079	0.292	0.197

CQS: 66.0



Color Rendering Index	Red Component	Color Quality Scale
CRI	CRI - R9	CQS
67.8	-17.9	66.0

Television Lighting Consistency Index	Color Fidelity	Color Gamut
TLCI	TM30 - Rf	TM30 Rg
40	64.3	97.3

Photometric & Chromaticity Report

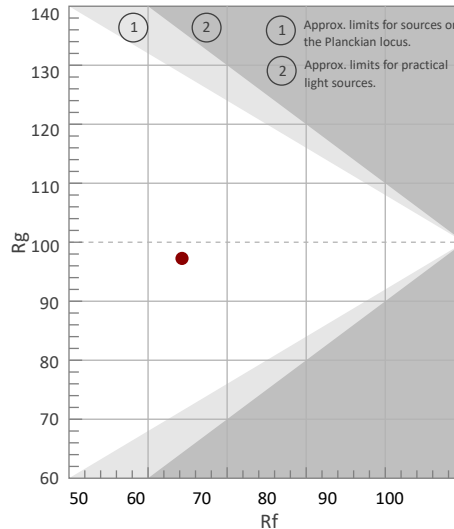
Rogue R1E Spot: Full Spot - Full Power

TM-30 Details

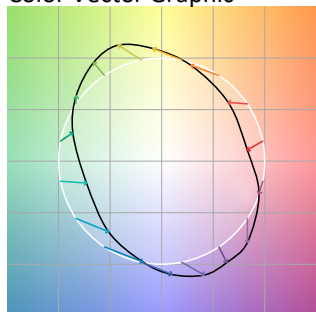
Rf 64.3
Fidelity Index (Rg)

Rg 97.3
Gammut Index (Rg)

Hue Bin	R _f	Graphic shifts (%)	
		Chroma	Hue
1	69	-16%	-6%
2	67	-15%	11%
3	52	-7%	28%
4	57	5%	29%
5	59	19%	19%
6	75	16%	2%
7	89	4%	-6%
8	75	-10%	-10%
9	71	-24%	7%
10	56	-19%	28%
11	22	-9%	39%
12	58	6%	31%
13	69	16%	19%
14	72	17%	-2%
15	73	13%	-19%
16	77	-1%	-13%



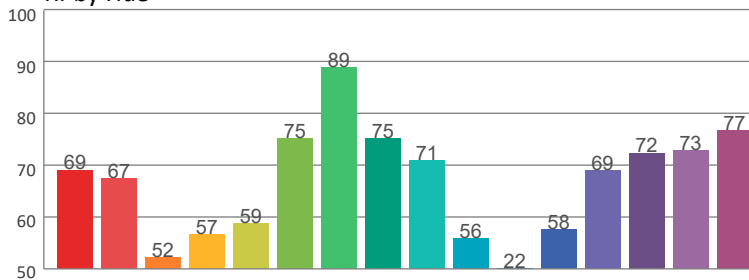
Color Vector Graphic



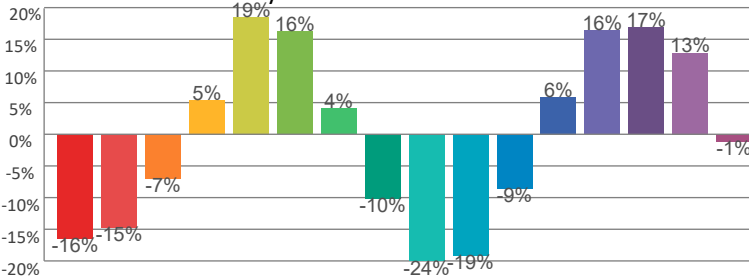
Color Distortion Graphic



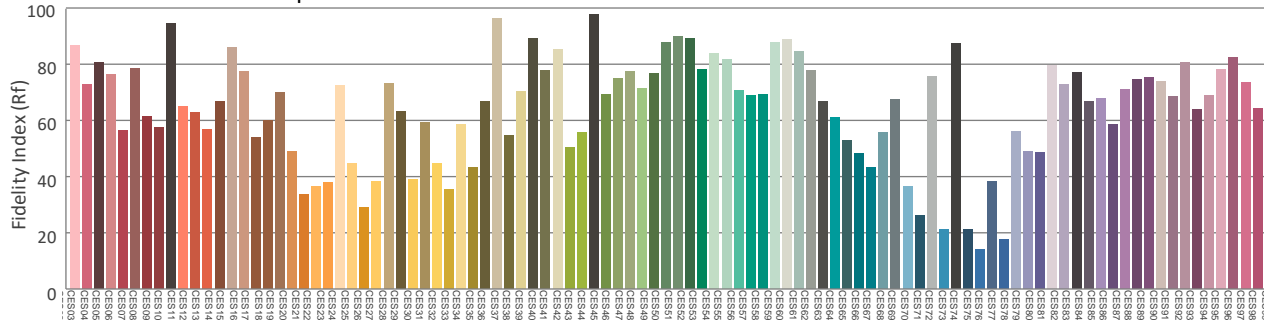
Rf by Hue



Local Chroma Shift by Hue



Color Evaluation Sample



Contact Us

General Information	Technical Support
Chauvet World Headquarters	
Address: 3360 Davie Rd., Suite 509 Davie, FL 33314 Voice: (954) 577-4455 Fax: (954) 929-5560 Toll Free: (800) 762-1084	Voice: (844) 393-7575 Fax: (954) 756-8015 Email: chauvetcs@chauvetlighting.com Website: www.chauvetdj.com
Chauvet U.K.	
Address: Pod 1 EVO Park Little Oak Drive, Sherwood Park Nottinghamshire, NG15 0EB UK Voice: +44 (0) 1773 511115 Fax: +44 (0) 1773 511110	Email: UKtech@chauvetlighting.eu Website: www.chauvetprofessional.eu
Chauvet Benelux	
Address: Stokstraat 18 9770 Kruishoutem Belgium Voice: +32 9 388 93 97	Email: BNLtech@chauvetlighting.eu Website: www.chauvetdj.eu
Chauvet France	
Address: 3, Rue Ampère 91380 Chilly-Mazarin France Voice: +33 1 78 85 33 59	Email: FRtech@chauvetlighting.fr Website: www.chauvetdj.eu
Chauvet Germany	
Address: Bruno-Bürgel-Str. 11 28759 Bremen Germany Voice: +49 421 62 60 20	Email: DEtech@chauvetlighting.de Website: www.chauvetdj.eu
Chauvet Mexico	
Address: Av. de las Partidas 34 - 3B (Entrance by Calle 2) Zona Industrial Lerma Lerma, Edo. de México, CP 52000 Voice: +52 (728) 690-2010	Email: servicio@chauvet.com.mx Website: www.chauvetdj.mx

Visit the applicable website above to verify our contact information and instructions to request support. Outside the U.S., U.K., Ireland, Benelux, France, Germany, or Mexico, contact the dealer of the record.

